



The new standard for Human Neurophysiology Research

Available in 130 and 280 channels, the **BEL EEG System One**[®] delivers unprecedented resolution and reproducibility



The BEL team has now created a new technology in dense array EEG for improved fit, comfort and usability, and introduces BEL's Geodesic Head Web® in different channel counts and sizes.

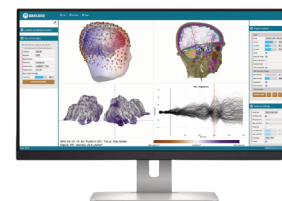
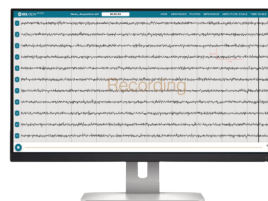
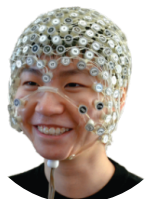


The Geodesic Head Web® uses BEL's patented design of the Modular Pentagonal Element (MPE) to achieve a better fit to all human head shapes and sizes, offering industry leading comfort and less than 60 second application time. Elegant electrode wire management and a small, lightweight connector give the Geodesic Head Web® high marks in usability.

A new single cord lock system provides a fast and first-fit advantage.



Along with the Geodesic Head Web®, BEL announces a new complete EEG solution for human neurophysiology researchers:



The BEL EEG System One® is a complete system for EEG acquisition and analysis. At less than 4 lbs and designed with modern hardware architecture for parallel computing, on-board processing, data storage, and wireless functionality, BEL Amp One® opens new possibilities for HD EEG research. The BEL View® software for acquisition and simple review is intuitive and easy to use, suitable for all applications and experience levels.

All of the BEL products are developed under BEL's quality system to meet regulatory standards. BEL products are not yet cleared as medical devices.

1776 Millrace Drive, Eugene, OR 97403
+1.541.525.9799 info@BEL.company
www.BEL.company



Scan QR code for the full brochure

